



ENTRANCE WITH CLASS

FRONT ENTRY DOORS / **AD series**



## Comfort is just a step away

Front entry doors, aren't they one of the most important parts of our home? They protect us from the cold, from the rain or the burglars, to mention just these examples. Doors also keeps us away from street noise. But how do you make the right choice, and buy a door that will meet our expectations and serve us for years?

An issue that requires careful consideration before the purchase is the heat transfer coefficient (U). The lower its value, the more heat will stay with us inside. We offer panelled doors with the UD coefficient of 0.44 W/(m<sup>2</sup>K).

When choosing our door, let's not forget to check out their water resistance. It's the water resistance of the door that will keep the driving rain outside in times of strong winds and heavy rain. Water resistance of the front entry door is rated from 3A to 9A. The higher the class, the better the door protects our home. We offer panelled doors rated 7A.

Infill panels are included in door leaves based on the MB-70, MB-79N, MB-86 & MB-104 Passive system, and come in a variety of colours and structures. The elements can be milled, decorated with applications or made of insulated glass. **Panelled doors can be fabricated very large and high – up to 1.40 m (W) and almost 2.60 m (H).** If, therefore, we dream of an impressive front entrance, this will be the perfect choice. But above all, the door should fit to the style of your home. If our interiors are the traditional ones, we should opt for a leaf with glass panels or wooden-like veneer. Lovers of modern interior can choose among RAL colours, think shade of graphite.

Let's take some time and choose a door with which we will create a beautiful entrance that will enchant our guests and will make us feel like we were in a safe haven.

## MB-104 Passive

# $U_D$ from 0.44 W/m<sup>2</sup>K

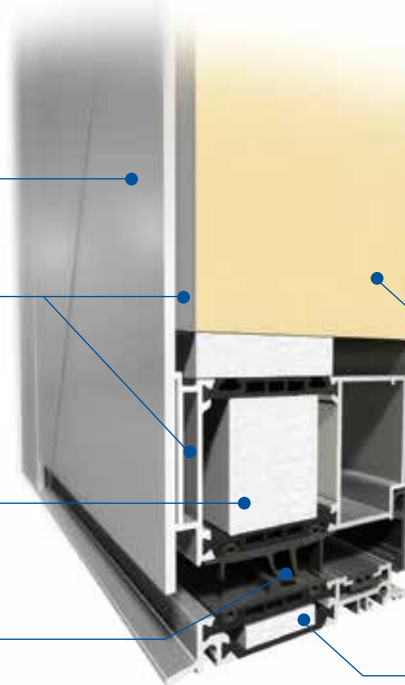
Panel door uses thermally insulated aluminium profile system – MB-104 Passive is the most technologically advanced door system offered. The leaf profile can be combined with special infills, aligned with the surface of the frame. The system is dedicated to passive and energy-efficient buildings

Aesthetically pleasing, decorative panels are available in various designs and RAL colours

Expansion profiles and door leaf panels

Design variants: SI, SI+ and AERO

Central gaskets around the leaf and the frame to seal, cover, and increase the thermal insulation of the door



### Technical details:

Frame depth	95 mm
Leaf depth	95 mm
Infill panel thickness	44 - 95 mm
Maximum dimensions of the leaf	(H×L) L up to 1400 mm, H up to 2600 mm

### Technical parameters:

Air permeability	Class 3, EN 12207
Water tightness	Class E1200 (1200 Pa), EN 12208
Wind load resistance	Class C4/B4, EN 12210
Thermal insulation	$U_D$ from 0.44 W/m <sup>2</sup> K
Burglary-resistance	RC2

High density polyurethane foam (PUR) with high thermal performance

95 mm wide threshold the frame and threshold are the same width, providing a desirable flush finish

## MB-86

# U<sub>D</sub> from 0.66 W/m<sup>2</sup>K

Our panel doors use thermally insulated aluminium profile system – MB-86 – which, just like the MB-104 Passive system, is dedicated to energy-efficient and passive building. The leaf profile can be combined with special infills, aligned with the surface of the frame.

## Technical details:

Frame depth	77 mm
Leaf depth	77 mm
Infill panel thickness	44 - 77 mm
Maximum dimensions of the leaf	(H×L) L up to 1400 mm, H up to 2600 mm

## Technical parameters:

Air permeability	Class 3, EN 12207
Water tightness	Class E900 (900 Pa), EN 12208
Wind load resistance	Class C5/B5, EN 12210
Thermal insulation	U <sub>D</sub> from 0.66 W/m <sup>2</sup> K
Burglary-resistance	RC2

Aesthetically pleasing, decorative panels are available in various designs and RAL colours

Expansion profiles and door leaf panels

They come in four versions: ST, SI, SI+ and AERO for a very good thermal performance

Excellent thermal insulation thanks to the polyurethane foam (PUR)

Rigid and durable aluminium profiles permit the fabrication of large-dimensioned doors

Specially designed weather strips provide high water tightness and low air permeability, bringing both a comfort and a potential for cost savings



## MB-79N

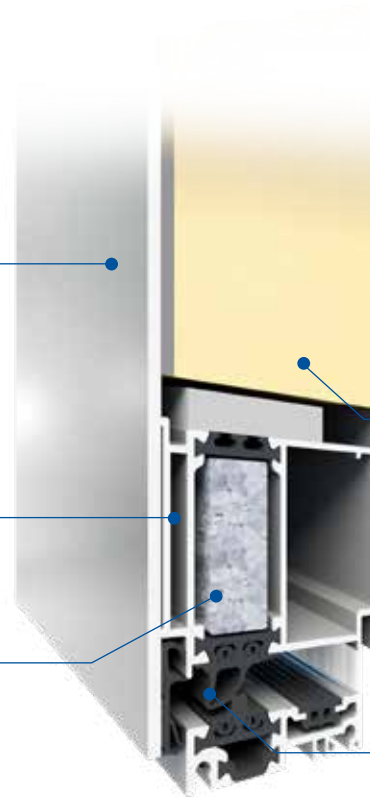
# U<sub>D</sub> from 0,7 W/m<sup>2</sup>K

Our panel door uses popular, thermally insulated aluminium profile system – MB-79N ST, MB-79N SI and MB-79N SI+. The leaf profile can be combined with special infills, aligned with the surface of the frame.

Elegant decorative panels, available in many different patterns and RAL colours and wood effect finishes

Expansion profiles

They come in three versions: MB-79N ST, MB-79N SI and MB-79N SI+, for a very good thermal performance



### Technical details:

Frame depth	70 mm
Leaf depth	70 mm
Infill panel thickness	44 -70 mm
Maximum dimensions of the leaf	(H×L) L up to 1400 mm, H up to 2600 mm

### Technical parameters:

Air permeability	Class 3, EN 12207
Water tightness	Class E900 (900 Pa), EN 12208
Wind load resistance	Class C5/B5, EN 12210
Thermal insulation	U <sub>D</sub> from 0.7 W/m <sup>2</sup> K
Burglary-resistance	RC2

XPS polyurethane foam ensures an excellent thermal insulation

Specially designed weather strips provide high water tightness and low air permeability, bringing both a comfort and a potential for cost savings



## MB-70

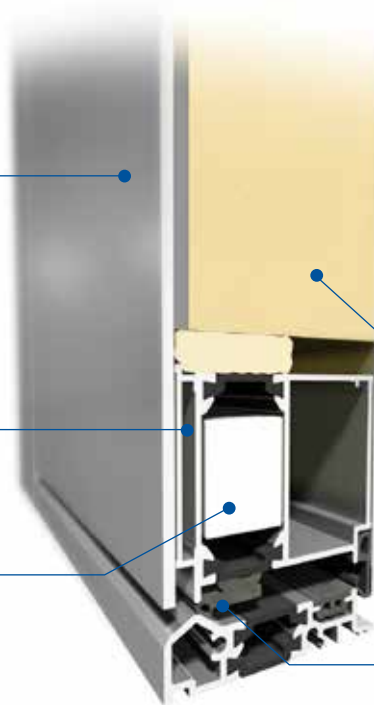
# $U_D$ from 0.9 W/m<sup>2</sup>K

The structure of panel doors is based on the popular thermally broken aluminium sections MB-70 and MB-70HI which complete the range of energy-efficient doors in the portfolio. Similarly to other panel door system the leaf profile is designed for coupling with special infill panels that can be installed flush with the door frame plane.

Elegant decorative panels, available in many different patterns and RAL colours and wood effect finishes

Expansion profiles

Two design variants: MB-70 and MB-70HI for a very good thermal performance

**Technical details:**

Frame depth	70 mm
Leaf depth	70 mm
Infill panel thickness	44 - 70 mm
Maximum dimensions of the leaf	(H×L) L up to 1200 mm, H up to 2400 mm

**Technical parameters:**

Air permeability	Klasa 4, EN 12207
Water tightness	Klasa 7A (300 Pa), EN 12208
Wind load resistance	Klasa C5/B5, EN 12210
Thermal insulation	$U_D$ from 0.9 W/m <sup>2</sup> K
Burglary-resistance	RC2

XPS extruded polystyrene with enhanced thermal insulation

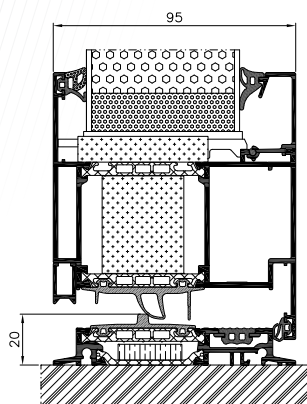
Specially designed weather strips provide high water tightness and low air permeability, bringing both a comfort and a potential for cost savings

## BASIC



### Insert panels

- Double glazing units,  $U_g$  coefficient of  $U_g$  0.5 W/m<sup>2</sup>K or of 0.7 W/m<sup>2</sup>K
- 44 to 72 mm thick panel
- Thermal transmittance for MB-70HI doors  $U_D$  from 1.3 W/m<sup>2</sup>K, for MB-79N doors  $U_D$  from 1.0 W/m<sup>2</sup>K, for MB-86 doors  $U_D$  from 0.8 W/m<sup>2</sup>K and for MB-104 doors  $U_D$  from 0.63 W/m<sup>2</sup>K
- Four versions: ST, HI, SI, SI+ and Aero

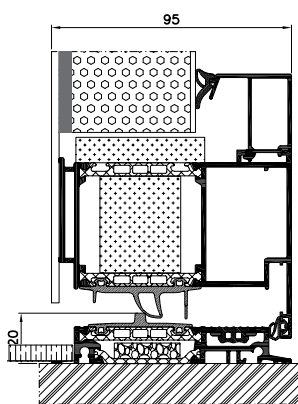


## CLASSIC



### Aligned on one side

- Triple glazing units,  $U_g$  coefficient of  $U_g$  0.5 W/m<sup>2</sup>K or of 0.7 W/m<sup>2</sup>K
- 44 to 85 mm thick panel
- Thermal transmittance for MB-70HI doors  $U_D$  from 1.1 W/m<sup>2</sup>K, for MB-79N doors  $U_D$  from 0.9 W/m<sup>2</sup>K, for MB-86 doors  $U_D$  from 0.64 W/m<sup>2</sup>K and for MB-104 doors  $U_D$  from 0.48 W/m<sup>2</sup>K
- Four versions: ST, HI, SI, SI+ and Aero

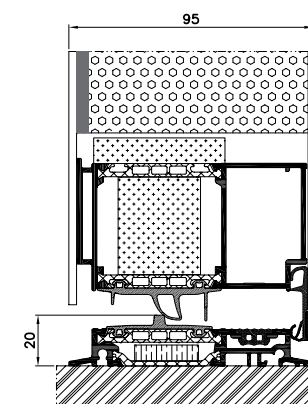


## EXCLUSIVE



### Aligned on both sides

- Triple glazing units,  $U_g$  coefficient of  $U_g$  0.5 W/m<sup>2</sup>K or of 0.7 W/m<sup>2</sup>K
- 70 mm thick panel (MB-70 and MB-79N), 77 mm (MB-86) and 95 mm (MB-104 Passive)
- Thermal transmittance for MB-70HI doors  $U_D$  from 0.9 W/m<sup>2</sup>K, for MB-79N doors  $U_D$  from 0.7 W/m<sup>2</sup>K, for MB-86 doors  $U_D$  from 0.63 W/m<sup>2</sup>K and for MB-104 doors  $U_D$  from 0.44 W/m<sup>2</sup>K
- Four versions: ST, HI, SI, SI+ and Aero



All available models can be inserted into the profiles or glued on one or both sides.



## AD01

- Pull AS 10 1600
- Glazing (front): VSG 33.1 thermofloat
- Glazing (center): Satinovo
- Glazing (backside) thermofloat with warm edge spacer
- Colour: RAL 7016



## AD02

- Pull AS 10 1600
- Glazing (front): VSG 33.1 thermofloat
- Glazing (center): Satinovo
- Glazing (backside) thermofloat with warm edge spacer
- Inox steel placed outside, aligned
- Colour: RAL 7016



## AD03

- Pull AS 10 1600
- Glazing (front): VSG 33.1 thermofloat
- Glazing (center): Satinovo
- Glazing (backside) thermofloat with warm edge spacer
- Inox steel placed outside, aligned
- Colour: RAL 7016



## AD04

- Pull AS 10 800
- Glazing (front): VSG 33.1 thermofloat
- Glazing (center): Satinovo
- Glazing (backside) thermofloat with warm edge spacer
- Inox steel placed outside, sticked
- Colour: RAL 7016





### AD05

- Pull AS 20 800
- Glazing (front): VSG 33.1 thermofloat
- Glazing (center): Satinovo
- Glazing (backside) thermofloat with warm edge spacer
- Inox steel placed outside, sticked
- Colour: RAL 7016



### AD06

- Pull AS 10 1400
- Glazing (front): VSG 33.1 thermofloat
- Glazing (center): Satinovo
- Glazing (backside) thermofloat with warm edge spacer
- Inox steel placed outside, aligned
- Colour: RAL 7016



### AD07

- Pull AS 10 1600
- External millings
- Colour: RAL 7016



### AD08

- Pull AD 134 1200
- Glazing (front): VSG 33.1 thermofloat
- Glazing (center): sandblasted glass with transparent strips
- Glazing (backside) thermofloat with warm edge spacer
- Inox steel placed outside, aligned
- Colour: RAL 7016



### AD09

- Pull AS 10 800
- Glazing (front): VSG 33,1 thermofloat
- Glazing (center): Satinovo
- Glazing (backside) thermofloat with warm edge spacer
- External millings
- Colour: RAL 7016



### AD10

- Pull AS 10 1200
- External millings plus inox steel placed outside
- Colour: RAL 7016



### AD11

- Pull AS 20 1200
- Glazing (front): VSG 33,1 thermofloat
- Glazing (center): Satinovo
- Glazing (backside) thermofloat with warm edge spacer
- External millings
- Colour: RAL 7016



### AD12

- Pull AS 10 1400
- Glazing (front): VSG 33,1 thermofloat
- Glazing (center): Satinovo
- Glazing (backside) thermofloat with warm edge spacer
- External millings
- Colour: RAL 7016



### AD13

- Pull AS 10 1200
- Glazing (front): VSG 33.1 thermofloat
- Glazing (center): Satinovo
- Glazing (backside) thermofloat with warm edge spacer
- Wood-like or inox steel placed outside, aligned
- Colour: RAL 9007



### AD14

- Pull AS 10 1200
- Inox steel placed outside, aligned
- Colour: RAL 7016



### AD15

- Pull AZ76
- Glazing (front): VSG 33.1 thermofloat
- Glazing (center): Satinovo
- Glazing (backside) thermofloat with warm edge spacer
- Inox steel placed outside, aligned
- Colour: RAL 7016/RAL 3004



### AD16

- Pull AW72
- External millings
- Colour: RAL 7001



AD17

- Pull AS 10 1600
- Colour: RAL 3004



AD18

- Pull AW10
- Inox steel placed outside, aligned
- Colour: RAL 7016



AD19

- Pull AS 10 800
- Glazing (front): VSG 33.1 thermofloat
- Glazing (center): sandblasted glass with transparent strips
- Glazing (backside) thermofloat with warm edge spacer
- Colour: RAL 7001



AD20

- Pull AS 10 1400
- Glazing (front): VSG 33.1 thermofloat
- Glazing (center): Satinovo
- Glazing (backside) thermofloat with warm edge spacer
- Inox steel placed outside, aligned
- Colour: RAL 7016



### AD21

- Pull AS 10 1200
- Glazing (front): VSG 33.1 thermofloat
- Glazing (center): Satinovo
- Glazing (backside) thermofloat with warm edge spacer
- Aligned, wood-like
- Colour: RAL 9010



### AD22

- Pull AS 10 1000
- Glazing (front): VSG 33.1 thermofloat
- Glazing (center): Satinovo
- Glazing (backside) thermofloat with warm edge spacer
- Inox steel placed outside, aligned
- Colour: RAL 7016



### AD23

- Pull AS 10 1200
- Glazing (front): VSG 33.1 thermofloat
- Glazing (center): Satinovo
- Glazing (backside) thermofloat with warm edge spacer
- External millings
- Colour: RAL 7016



### AD24

- Pull AS 10 1400
- Inox steel placed outside, aligned
- Colour: RAL 7016/Wood-like
- Wood-like colour: ADEC O205 Walnut Vein



### AD25

- Pull AS 10 1400
- Glazing (front): VSG 33.1 thermofloat
- Glazing (center): Satinovo
- Glazing (backside) thermofloat with warm edge spacer
- External millings plus stainless steel, placed outside, aligned
- Colour: RAL 9016



### AD26

- Pull AS 10 1600
- Glazing (front): VSG 33.1 thermofloat
- Glazing (center): Satinovo
- Glazing (backside) thermofloat with warm edge spacer
- Inox steel placed outside, aligned
- Colour: RAL 3004



### AD27

- Pull AS 10 1800
- Glazing (front): VSG 33.1 thermofloat
- Glazing (center): Satinovo
- Glazing (backside) thermofloat with warm edge spacer
- Inox steel placed outside, aligned
- Colour: RAL 7016



### AD28

- Pull AS 10 1400
- Glazing (front): VSG 33.1 thermofloat
- Glazing (center): Satinovo
- Glazing (backside) thermofloat with warm edge spacer
- Inox steel placed outside, aligned
- Colour: RAL 9016



**AD29**

- Pull AQ10 1020 1600 mm with RAL 9005 powder coating
- External millings
- Colour: RAL 7016
- Wood-like colour: ADEC C212 Gean

**AD30**

- Pull AW25
- External millings
- Colour: RAL 3003

**AD31**

- Pull AW104
- External millings
- Colour: RAL 7001

**AD32**

- Flush-mounted pull: AW23, L-1400 mm, inox steel
- Colour: RAL 9007



### AD33

- Flush-mounted pull: L - 1000 mm integrated with the panel, with matching powder coating
- Decoration: flush-mounted stainless steel
- Colour: RAL 9016



### AD34

- Flush-mounted pull: L - 1000 mm integrated with the panel, with matching powder coating
- Decoration: wood-effect powder coating
- Colour: RAL 9016
- Colour: wood effect ADEC D207 Winchester



### AD35

- Flush-mounted pull: L - 1600 mm integrated with the panel, with matching powder coating
- Front glazing: Thermofloat VSG 33.1
- Centre glazing: Satinovo
- Back glazing: Thermofloat, with a warm edge spacer bar
- Colour: RAL 9016



### AD36

- Flush-mounted pull: L - 1600 mm integrated with the panel, with matching powder coating
- Decoration: flush-mounted stainless steel
- Colour: RAL 7016

Models with a flush-mounted, integrated pull available for profiles from 65 to 95 mm thick.

**AD37**

- Flush-mounted pull: L - 1600 mm integrated with the panel, with matching powder coating
- Decoration: milled on the exterior
- Colour: RAL 9007

**AD38**

- Flush-mounted pull: L - 1600 mm integrated with the panel, with matching powder coating
- Colour: RAL 9007

Models with a flush-mounted, integrated pull available for profiles from 65 to 95 mm thick.





### AD39

- Flush-mounted pull: L - 1600 mm integrated with the panel, with RAL 9005 powder coating
- Colour: concrete effect



### AD40

- Pull: AQ 1020 1600
- Colour: concrete effect



### AD41

- Pull: AQ 1020 1600 with RAL 9005 powder coating
- Front glazing: Thermofloat VSG 33,1
- Centre glazing: Satinovo
- Back glazing: Thermofloat, with a warm edge spacer bar
- Colour: concrete effect



### AD42

- Pull: AQ 1020 1600
- Decoration: 3D stainless steel on the outside
- Colour: concrete effect

Models with a flush-mounted, integrated pull available for profiles from 65 to 95 mm thick.



### AD43

- Pull: AQ 1020 1600 with RAL 9005 powder coating
- Colour: Makalu; natural stone



### AD44

- Flush-mounted pull: L: 1600 mm integrated with the panel, with RAL 9005 powder coating
- Colour: Makalu; natural stone

The images and the colour of the stone are provided as a visual reference.

The type of stone selected, its structure and its thickness may vary slightly on account of its natural characteristics.

Models with a flush-mounted, integrated pull available for profiles from 65 to 95 mm thick.







### AD45

- Flush-mounted pull: L: 1600 mm integrated with the panel, with RAL 9005 powder coating
- Colour: Everest; natural stone



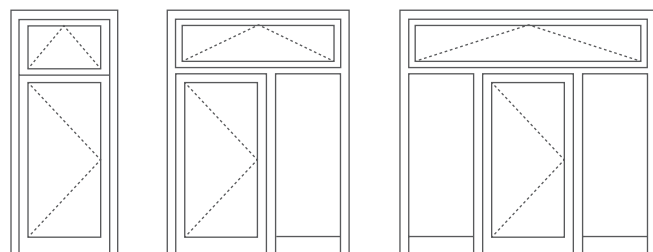
### AD46

- Pull: AQ 1020 1600 with RAL 9005 powder coating
- Decoration: 3D stainless steel on the outside
- Colour: RAL 7016 / Annapurna; natural stone

The images and the colour of the stone are provided as a visual reference.  
The type of stone selected, its structure and its thickness may vary slightly on account of its natural characteristics.

Models with a flush-mounted, integrated pull available for profiles from 65 to 95 mm thick.

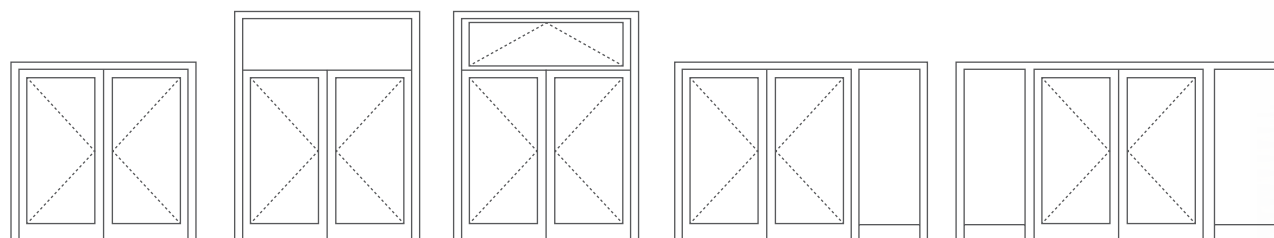




1

2

3



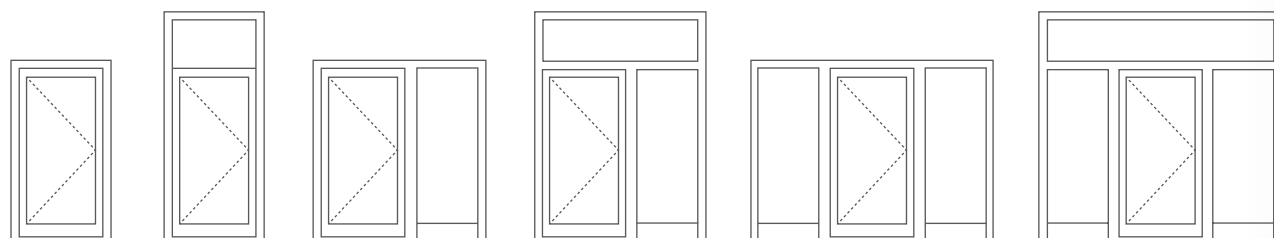
4

5

6

7

8



9

10

11

12

13

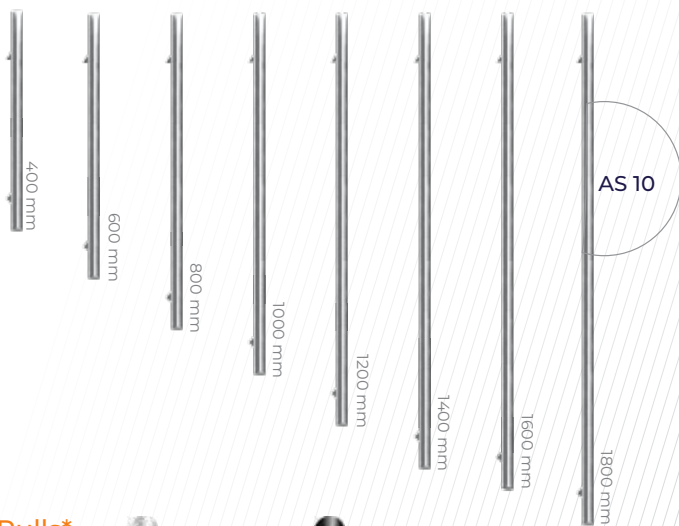
14



# PANELLED DOOR AD SERIES

## Pulls\*

stainless steel black

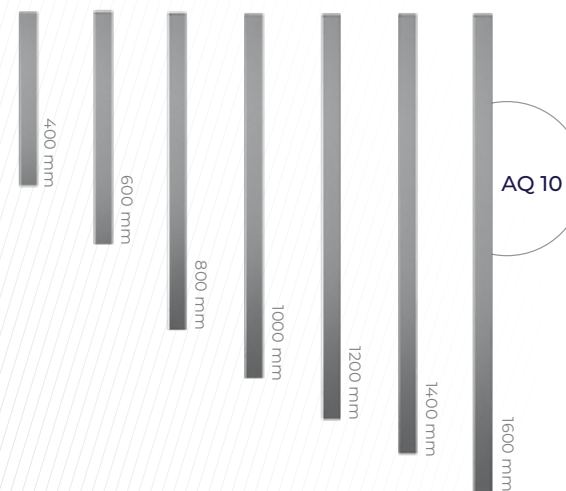


available  
día. 30 mm  
straight bracket

AS 10 400  
AS 10 600  
AS 10 800  
AS 10 1000  
AS 10 1200  
AS 10 1400  
AS 10 1600  
AS 10 1800

## Pulls\*

stainless steel black



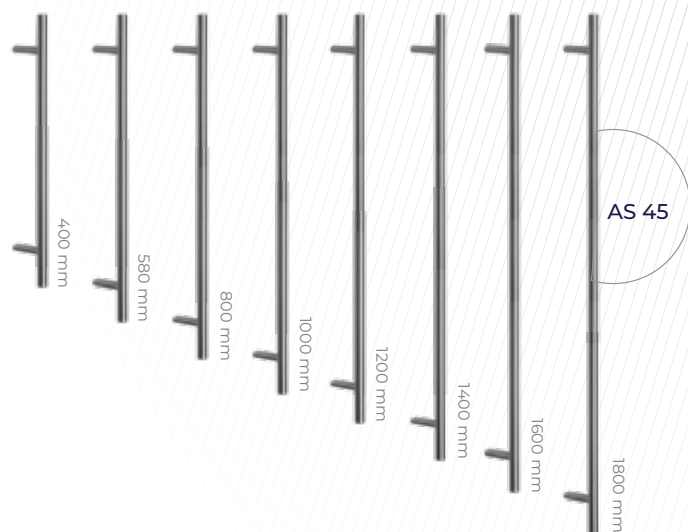
available  
40 x 20, 40 x 40 mm

AQ 1020 400  
AQ 1020 600  
AQ 1020 800  
AQ 1020 1000  
AQ 1020 1200  
AQ 1020 1400  
AQ 1020 1600

AQ 1040 400  
AQ 1040 600  
AQ 1040 800  
AQ 1040 1000  
AQ 1040 1200  
AQ 1040 1400  
AQ 1040 1600

## Pulls\*

stainless steel black

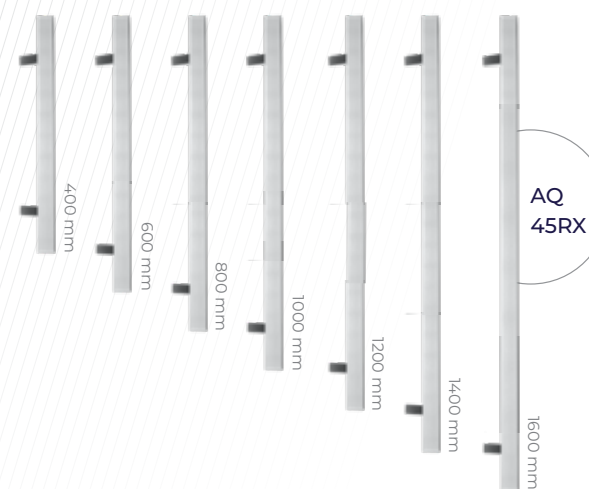


available  
día. 30 mm  
angle brace 45°

AS 45 400  
AS 45 580  
AS 45 800  
AS 45 1000  
AS 45 1200  
AS 45 1400  
AS 45 1600  
AS 45 1800

## Pulls\*

stainless steel black



available  
40 x 20, 40 x 40 mm

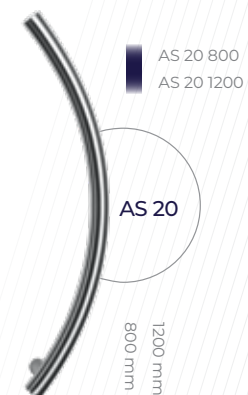
AQ 4520RX 400  
AQ 4520RX 600  
AQ 4520RX 800  
AQ 4520RX 1000  
AQ 4520RX 1200  
AQ 4520RX 1400  
AQ 4520RX 1600

AQ 4540RX 400  
AQ 4540RX 600  
AQ 4540RX 800  
AQ 4540RX 1000  
AQ 4540RX 1200  
AQ 4540RX 1400  
AQ 4540RX 1600

\* Mounting kit included - see the price list for details.

and large mounting kits (polyurethane adhesive, activator, primer, sponge to apply the primer + sponge sanding block) and small mounting kits (polyurethane adhesive, sponge to apply the primer + sponge sanding block).

## Pulls\*

 stainless steel


## Flush fitted pulls

 stainless steel
  black


AW 10

AW 10  
option for cylinder

AW 19



AW 25



AW 23



AW 72



AW 21



AW 22



AW 104

## Decorative pulls



AZ 76



AZ 77



AZ 82



AZ 29



AZ 31

## Lever pull

1924216X  
stainless steel,  
natural anode  
and inox, white,  
anthracite, black



1924218X  
stainless steel,  
natural anode and  
inox, white, anthracite,  
black



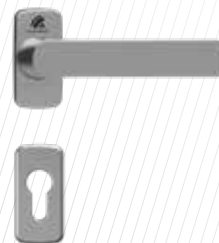
1924230X  
stainless steel

8001289X  
natural anode,  
RAL



1924113X  
stainless steel

1924111X  
RAL



1924113X  
stainless steel

## Rosettes



AR 61421



AR 74421



AR 78421



ARS 10



ARS 20

## Scratch protection



KS100



KS200



KS300



KS400



KS400 BIOKEY

## Kickplates



EK100 kick plate, flush-mounted  
or applied with adhesive

## Pull with electronics



**Fingerprint scanner**

available with the AQ 10 and AQ 45



**PWZ integrated with the panel**

colour  
of pull:  
as per  
the RAL  
chart



**PWZ\* pull with backlighting**



available  
with the  
AS 10  
pull

**Micro switch set into the pull\***



available  
with the  
AQ 10  
pull



available  
with the  
AS 10  
AS 45  
pull

**Touch sensor set into the pull\***



available  
with the  
AQ 10  
PQ 45  
AQ  
AW 10  
AW 21  
AW 22  
AW 72  
pull

\*Available backlight colours:



cool white (standard)



warm white



## Ornaments



Master-Point



Chinchilla



Satinata



Master-Ligne



Master-Carre

Dor-Jan offers a wide range of glass with motif, glass made of transparent or ornamental glass in its most popular models.

All door models come in variants with sidelight and toplight.

**Variant 1:** Sandblasted glass (motif)

**Variant 2:** Transparent glass

**Variant 3:** Ornamental glass

**Variant 4:** Safety glass

Sidelights and fixed lights include triple glazing units with warm glass spacers.

Sidelights (fixed glazing) can be placed either on one or on both sides of the door assembly.

Maximum sidelight width: 1400 mm

**Extra ornaments (optional):**

"Master-Point"

"Chinchilla"

"Satinata"

"Master-Ligne"

"Master-Carre"

"Mirrastar" (mirror effect)

"Antisol" (semi-transparent mirror effect)



## Wood effect / Concrete effect



Golden Oak  
ADEC D101



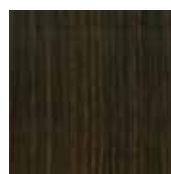
Rustic Oak  
ADEC D210



Swamp Oak  
ADEC D502



Vintage Oak  
ADEC D825



Ebony  
ADEC M102



Palisander  
ADEC M332



Walnut  
ADEC O102



Walnut Vein  
ADEC O205



Dark walnut  
ADEC O306



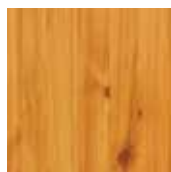
Mahogany  
ADEC M103



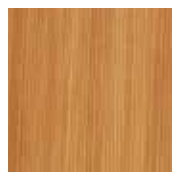
Mahogany Sapeli  
ADEC M204



Pine  
ADEC S106



Pine  
ADEC S110



Fir  
ADEC J107



Fir  
ADEC S208



Beech  
ADEC B108



Cherry  
ADEC W109



Wenge  
ADEC W205



Winchester  
ADEC D207



Gean  
ADEC C110

## RAL &amp; structural colours\*



Gean  
ADEC C212



Dark Cherry  
ADEC C106



Chestnut  
ADEC K101



Concrete  
ADEC E137

\* All RAL colours and structural colours as per the offer  
The colours may vary slightly from the finished product.



# DOR-JAN

## WINDOWS & DOORS

Quality Design Service

DOR-JAN WINDOWS & DOORS  
24 ALFRIC SQUARE  
PETERBOROUGH  
PE2 7JP

[www.dorjan.co.uk](http://www.dorjan.co.uk)

07498 983663  
07498 983666  
07552 033667

[dorjancontact@gmail.com](mailto:dorjancontact@gmail.com)